



### Model 120008

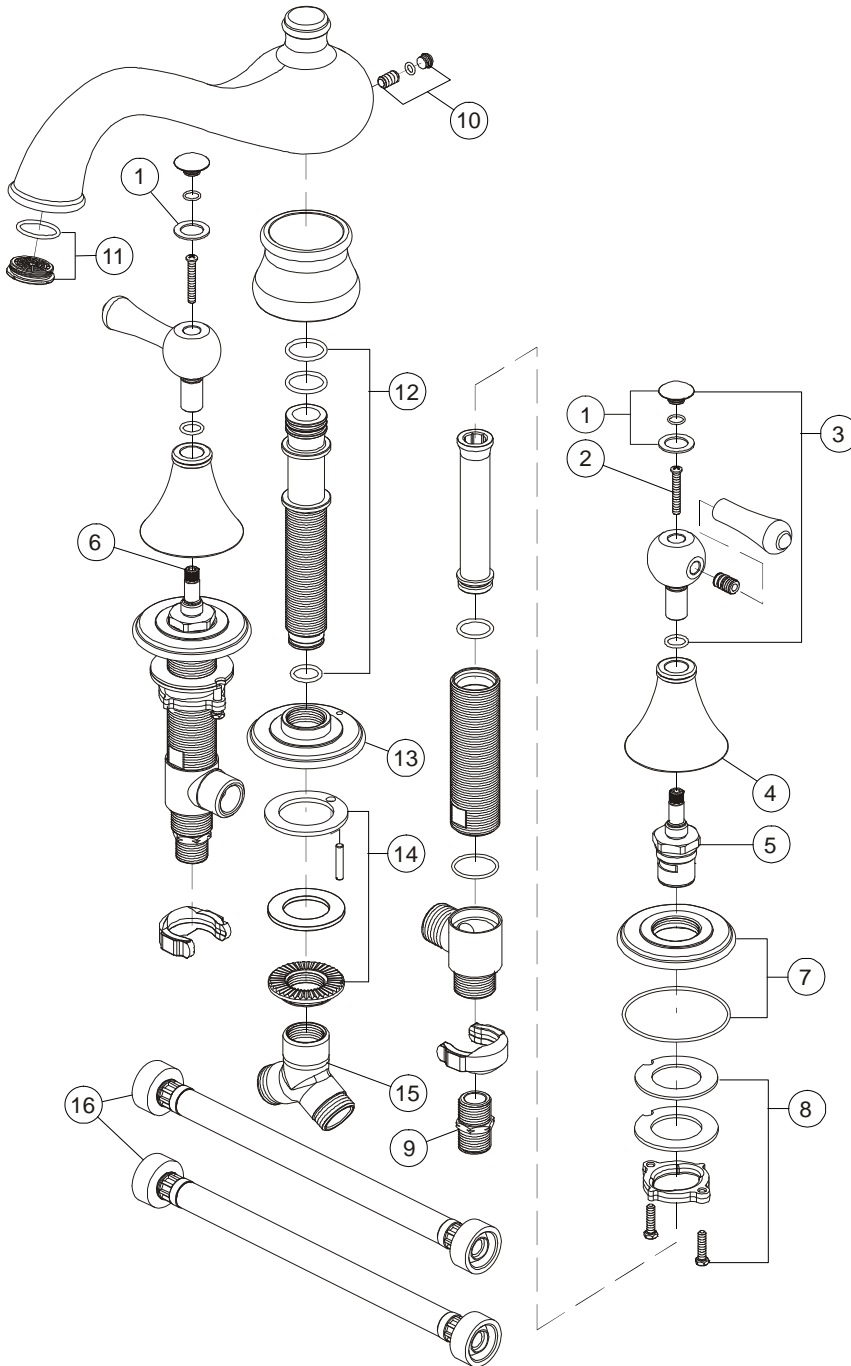
Twin Lever Handle Widespread Roman Tub Faucet  
Up To 12" Widespread  
Brushed Nickel Finish  
1/2" IPS Connection

# SONOMA™



Model 120008

**Refer to Premier Faucet Parts List Sheet for part numbers and ordering information.**



For additional information contact Premier Faucet at 866-745-4010 or visit our website at [www.premierfaucet.com](http://www.premierfaucet.com)





### Model 120008

Twin Lever Handle Widespread Roman Tub Faucet  
Up To 12" Widespread  
Brushed Nickel Finish  
1/2" IPS Connection

# SONOMA™



*Refer to Premier Faucet Parts Schematic Sheet for parts diagram.*

INDEX	DESCRIPTION	MATERIAL	QTY	PART NO
1	SCREW COVER ASSY H & C SET	METAL	2	994239
2	HANDLE SCREW	STAINLESS STEEL	2	994193
3	HANDLE ASSEMBLY	METAL	2	994133
4	CANOPY	BRASS	2	994328
5	CARTRIDGE - COLD	CERAMIC	1	994108
6	CARTRIDGE - HOT	CERAMIC	1	994109
7	BASE ASSEMBLY	BRASS	2	994381
8	INSTALLATION KIT	BRASS	2	994263
9	IPS ADAPTER	BRASS	2	994575
10	SPOUT SCREW ASSEMBLY	STAINLESS STEEL	1	994511
11	FLOW CONDITIONER	PLASTIC	1	994514
12	SPOUT RISER ASSY	BRASS	1	994509
13	SPOUT BASE	BRASS	1	994494
14	INSTALLATION KIT	BRASS	1	994264
15	Y CONNECTOR	BRASS	1	994597
16	HOSE	REINFORCED PVC	2	994559

